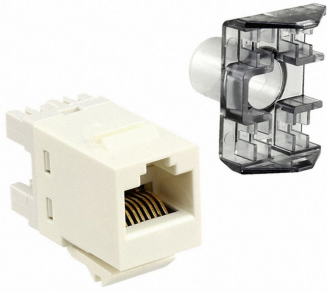


1375055-3



SL110 Series Modular Jack, RJ45, category 6, T568A/T568B, unshielded, without dust cover, white

OBSOLETE

Replaced By:

1-1375055-3

SL110 Series Modular Jack, RJ45, category 6, T568A/T568B, unshielded, without dust cover, alpine white

Product Classification

Regional Availability	Asia Latin America North America
Portfolio	NETCONNECT®
Product Type	Modular jack
Product Series	SL Series

General Specifications

ANSI/TIA Category	6
Cable Type	Unshielded
Color	White
Conductor Type	Solid Stranded
Integrated Dust Cover Type	None
Mounting	SL Series faceplates and panels
Outlet Feature	Inverted jack face
Outlet Type	Standard
Termination Punchdowns, minimum	200 times
Termination Tool	SL Termination tool
Termination Type	IDC
Transmission Standards	ANSI/TIA-568-C.2 ISO/IEC 11801 Class E

1375055-3

Wiring T568A | T568B

Dimensions

Panel Cutout, recommended 14.78 x 20.07 mm (0.58 x 0.79 in)

Panel Thickness, recommended 1.6 mm | 0.063 in

Height 16.26 mm | 0.64 in

Width 14.48 mm | 0.57 in

Depth 30.48 mm | 1.2 in

Compatible Insulated Conductor Diameter, maximum 1.45 mm | 0.057 in

Contact Plating Thickness 1.27 µm

Compatible Conductor Gauge, solid 24–22 AWG

Compatible Conductor Gauge, stranded 26–24 AWG

Electrical Specifications

Safety Voltage Rating 150 Vac

Material Specifications

Contact Base Material Beryllium copper

Contact Plating Material Gold

Material Type Polycarbonate

Mechanical Specifications

Plug Insertion Life, minimum 750 times

Plug Retention Force, minimum 89 N | 20.008 lbf

Environmental Specifications

Operating Temperature -40 °C to +70 °C (-40 °F to +158 °F)

Flammability Rating UL 94 V-0

Safety Standard CSA | cUL

Packaging and Weights

Included Strain relief cap

Packaging quantity 1

Packaging Type Bag

Regulatory Compliance/Certifications

Agency**Classification**

CHINA-ROHS

Below maximum concentration value

REACH-SVHC

Compliant as per SVHC revision on www.commscope.com/ProductCompliance

ROHS

Compliant

