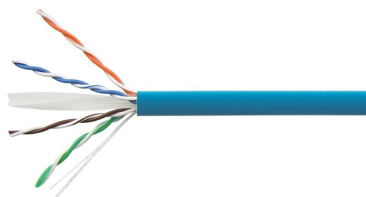


1427071-6 | CS30CM BLU C6 4/24 U/UTP RIB 305M



Copper Cable, category 6, 4 pair, UTP, CM rated, 24 AWG, 305 m reel in box, blue

Product Classification

| | |
|------------------------------|--------------------|
| Regional Availability | Asia |
| Portfolio | NETCONNECT® |
| Product Type | Twisted pair cable |

General Specifications

| | |
|--------------------------------|---|
| Product Number | CS30CM |
| ANSI/TIA Category | 6 |
| Cable Component Type | Horizontal |
| Cable Type | U/UTP (unshielded) |
| Conductor Type, singles | Solid |
| Conductors, quantity | 8 |
| Jacket Color | Blue |
| Pairs, quantity | 4 |
| Transmission Standards | ANSI/TIA-568.2-D CENELEC EN 50288-6-1 ISO/IEC 11801 Class E |

Dimensions

| | |
|--------------------------------------|---------------------|
| Cable Length | 304.8 m 1000 ft |
| Diameter Over Conductor | 0.978 mm 0.038 in |
| Diameter Over Jacket, nominal | 5.588 mm 0.22 in |
| Conductor Gauge, singles | 24 AWG |

Electrical Specifications

| | |
|---|---------|
| Characteristic Impedance | 100 ohm |
| dc Resistance Unbalance, maximum | 5 % |

1427071-6 | CS30CM BLU C6 4/24 U/UTP RIB 305M

| | |
|--|---|
| dc Resistance, maximum | 9.38 ohms/100 m 2.859 ohms/100 ft |
| Delay Skew, maximum | 45 ns |
| Dielectric Strength, minimum | 1500 Vac 2500 Vdc |
| Mutual Capacitance at Frequency | 5.6 nF/100 m @ 1 kHz |
| Nominal Velocity of Propagation (NVP) | 67 % |
| Operating Frequency, maximum | 250 MHz |
| Operating Voltage, maximum | 80 V |
| Propagation Delay, maximum | 536 ns/100m @250MHz |
| Remote Powering | Fully complies with the recommendations set forth by IEEE 802.3bt (Type 4) for the safe delivery of power over LAN cable when installed according to ISO/IEC 14763-2, CENELEC EN 50174-1, CENELEC EN 50174-2 or TIA TSB-184-A |

Electrical Cable Performance

| | | | |
|---------------|---|---------------|---|
| CS | CommScope | NEXT | Near End Crosstalk (dB/100m) |
| STD | Refers to the standard value listed under Transmission Standards in the Electrical Specifications above | PSNEXT | Power Sum Near End Crosstalk (db/100m) |
| TYP | Typical Electrical Performance | ACRF | Attenuation to Crosstalk Ratio - Far End (dB/100m) |
| IL | Insertion Loss (dB/100m) | RL | Return Loss (dB) |
| ACR | Attenuation to Crosstalk Ratio (dB/100m) | ELTCTL | Equal Level Transverse Conversion Transfer Loss (dB/100m) |
| PSACR | Power Sum Attenuation to Crosstalk Ratio (dB/100m) | | |
| PSACRF | Power Sum Attenuation to Crosstalk Ratio - Far End (dB/100m) | | |
| TCL | Transverse Conversion Loss (dB/100m) | | |

| Freq. MHz | IL | NEXT | ACR | PSNEXT | PSACR | ACRF | PSACRF | RL | TCL | ELTCTL |
|-----------|------|------|------|--------|-------|------|--------|------|------|--------|
| | STD | STD | STD | STD | STD | STD | STD | STD | STD | STD |
| 1 | 2 | 74.3 | 72.3 | 72.3 | 70.3 | 67.8 | 64.8 | 20 | 40 | 35 |
| 4 | 3.8 | 65.3 | 61.5 | 63.3 | 59.5 | 55.8 | 52.8 | 23 | 40 | 23 |
| 8 | 5.3 | 60.8 | 55.4 | 58.8 | 53.4 | 49.9 | 46.9 | 24.5 | 40 | 16.9 |
| 10 | 6 | 59.3 | 53.3 | 57.3 | 51.3 | 47.8 | 44.8 | 25 | 40 | 15 |
| 16 | 7.6 | 56.2 | 48.7 | 54.2 | 46.7 | 43.7 | 40.7 | 25 | 38 | 10.9 |
| 20 | 8.5 | 54.8 | 46.3 | 52.8 | 44.3 | 41.8 | 38.8 | 25 | 37 | 9 |
| 25 | 9.5 | 53.3 | 43.8 | 51.3 | 41.8 | 39.8 | 36.8 | 24.3 | 36 | 7 |
| 31.25 | 10.7 | 51.9 | 41.2 | 49.9 | 39.2 | 37.9 | 34.9 | 23.6 | 35.1 | |
| 62.5 | 15.4 | 47.4 | 32 | 45.4 | 30 | 31.9 | 28.9 | 21.5 | 32 | |
| 100 | 19.8 | 44.3 | 24.5 | 42.3 | 22.5 | 27.8 | 24.8 | 20.1 | 30 | |
| 155 | 25.2 | 41.4 | 16.3 | 39.4 | 14.3 | 24 | 21 | 18.8 | 28.1 | |
| 200 | 29 | 39.8 | 10.8 | 37.8 | 8.8 | 21.8 | 18.8 | 18 | 27 | |
| 250 | 32.8 | 38.3 | 5.5 | 36.3 | 3.5 | 19.8 | 16.8 | 17.3 | 26 | |

Material Specifications

| | |
|----------------------------|-------------|
| Conductor Material | Bare copper |
| Insulation Material | Polyolefin |
| Jacket Material | PVC |

1427071-6 | CS30CM BLU C6 4/24 U/UTP RIB 305M

Mechanical Specifications

Minimum Bend Radius Note 4 times the outer cable diameter

Environmental Specifications

Installation temperature -0 °C to +60 °C (-32 °F to +140 °F)

Operating Temperature -20 °C to +60 °C (-4 °F to +140 °F)

Storage Temperature -20 °C to +80 °C (-4 °F to +176 °F)

Environmental Space Non-plenum

Flame Test Method CM | UL 1685

Packaging and Weights

Packaging Type Reel in box

Regulatory Compliance/Certifications

Agency

CHINA-ROHS

REACH-SVHC

ROHS

Classification

Below maximum concentration value

Compliant as per SVHC revision on www.commscope.com/ProductCompliance

Compliant

